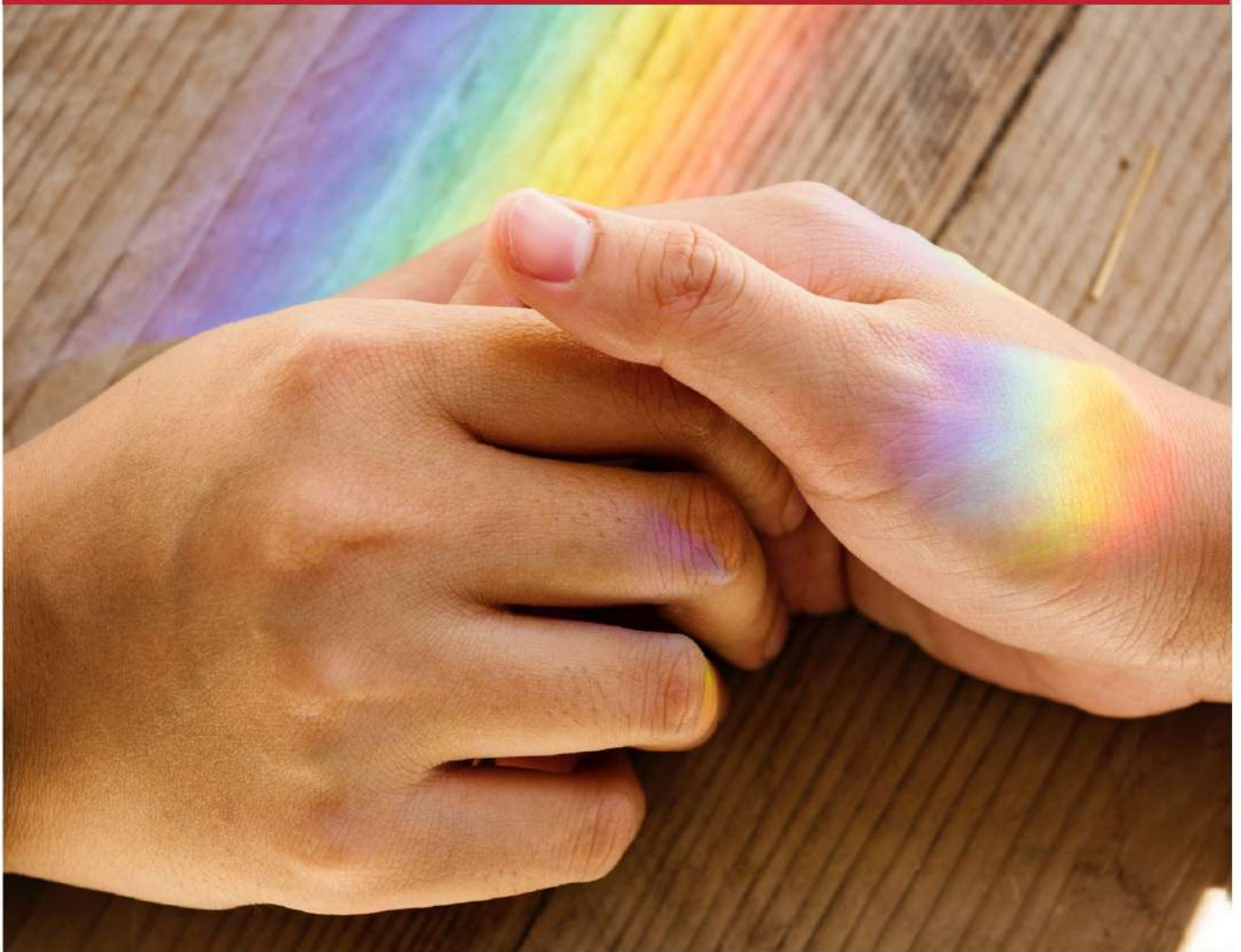


A Brief Guide to LGBTQ+ Individual and Family Resources



Provided for you by the UCM
Marriage and Family Therapy Clinic
660-543-4813 mft@ucmo.edu

UNIVERSITY OF
CENTRAL MISSOURI[®]
LEARNING TO A GREATER DEGREE

LGBTQ+ individuals and families can face many challenges...

Discrimination is Real

The number of Anti-LGBTQ+ hate crimes continues to increase in America, but **Kansas City Anti-Violence Project (KCAVP)** is committed to providing domestic violence, sexual assault and hate crimes advocacy and education to the LGBTQ community. Call 816-561-0550 or visit www.kcavp.org for more info.

So is the Suicide Risk

Those who identify as LGBTQ+ are at a higher risk of suicide—especially LGBTQ+ youth, but **The Trevor Project** is providing crisis intervention and suicide prevention services to LGBTQ+ youth. Visit www.thetrevorproject.org/get-help-now for info.

...but we are not alone.

It is Getting Better

In a 2013 Pew Research Survey, 92% of adults who identify as LGBT felt Americans were more accepting of LGBT people and homosexuality as compared to the previous decade.

Other Pew Research shows Americans who choose to identify as LGBT has also increased in the past few years.





A Few More Local and Missouri State Resources

PROMO envisions a Missouri with full equality regardless of sexual orientation, gender identity, or gender expression.

promoonline.org
314-862-4900

The Kansas City Center for Inclusion, Inc. (KCCI) is Kansas City's LGBTQIA+ resource and community center.

www.inclusivekc.org

PFLAG Kansas City is the KC chapter of PFLAG, the nation's foremost family-based organization committed to the civil rights of lesbian, gay, bisexual and transgender (LGBT) people.

pflagkc.org
PFLAG-KC helpline 816-765-9818

Mental Health, Counseling, & Therapy Resources

UCM MFT Clinic	660-543-4813
PFLAG-KC helpline	816-765-9818
Pathways, Inc	660-747-6313
Trans Lifeline	877-565-8860
Suicide Lifeline	800-273-8255
GLBT National Hotline	888-843-4564
GLBT National Youth Talkline	800-246-7743

If you are in danger or need to speak to someone immediately please call 911, contact the Missouri Crisis Line at 1-888-761-4357 or by texting HAND to 839863, or visit an emergency room.

CONTACT US!

**University of Central Missouri
Marriage & Family Therapy Clinic**

600 S. College Ave

660-543-4813

mft@ucmo.edu

UNIVERSITY OF
CENTRAL MISSOURI[®]

LEARNING TO A GREATER DEGREE